

EPISODE 5 Practical English Getting around

asking how to get there V directions

1 HOLLY AND ROB IN BROOKLYN

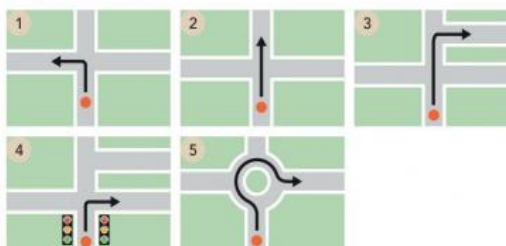


- a 9.17 Watch or listen to Rob and Holly. Mark the sentences **T** (true) or **F** (false).
- 1 Rob has just done an interview.
 - 2 He is in a hurry.
 - 3 He has another interview in Manhattan.
 - 4 He has another coffee.
 - 5 Barbara phones Rob.
 - 6 The restaurant is booked for seven o'clock.

British and American English
 restroom = American English
 toilet = British English
 the subway = American English
 the underground = British English

- b Watch or listen again. Say why the **F** sentences are false.

2 VOCABULARY directions



- a Look at the pictures and complete the phrases.

- 1 Turn _____.
- 2 Go _____ on.
- 3 Take the _____ turning on the right.
- 4 Turn right at the _____ lights.
- 5 Go round the _____ and take the third exit.

- b 9.18 Watch or listen and check.

- c Cover the phrases and look at the pictures. Say the phrases.

3 ASKING HOW TO GET THERE

- a 9.19 Cover the conversation on p.77 and watch or listen. Mark Rob's route on the map.





- b Watch or listen again. Complete the **You hear** phrases.

You say	You hear
How do I get to Greenwich Village on the subway?	Go to the subway station at Prospect Park. 1 _____ the B train to West 4th Street.
How many stops is that?	Six or seven.
OK. And then?	From West 4th Street take the A train, and get 2 _____ at 14th Street.
Could you say that again?	OK. From Prospect Park take the B train to West 4th Street, and then

	take the A train to 14th Street. That's only one 3 _____.
Where's the restaurant?	Come out of the subway on Eighth Avenue, go 4 _____ on for about 50 yards and take the 5 _____ left. That's Greenwich Avenue. The restaurant's on the 6 _____. It's called The Tea Set.
OK, thanks. See you later.	And don't get 7 _____!

- c **9.20** Watch or listen and repeat the **You say** phrases. Copy the **rhythm**.
- d Practise the conversation with a partner.
- e **In pairs, role-play the conversation.**
- A** **B** is at Prospect Park. Choose a destination on the subway map. Give **B** directions. You start with *Go to the subway station at...*
- B** Follow **A's** directions, and tell **A** which subway stop you have arrived at. Were you right?
- f Swap roles.

(Take the B train to... Then...

4 **ROB IS LATE...AGAIN**



- a **9.21** Watch or listen to Rob and Jenny. Is the date a success?
- b Watch or listen again and answer the questions.
- 1 What excuse does Rob give for being late?
 - 2 How long has Jenny waited for him?
 - 3 What does Rob suggest they do?
 - 4 What does Jenny say that Rob could do?
 - 5 Who is Rob interested in: Holly or Jenny?
- c Look at the **Social English** phrases. Can you remember any of the missing words?

Social English	
1 Rob	I'm so _____.
2 Rob	I _____ I'm sorry.
3 Jenny	I don't _____ like a walk.
4 Jenny	It's been a _____ day.
5 Jenny	I didn't _____ to say that.

- d **9.22** Watch or listen and complete the phrases. How do you say them in your language? Then watch or listen and repeat the phrases.
- e Complete conversations A–D with **Social English** phrases 1–5. Then practise them with a partner.

A	Let's go to the park.	And anyway, it's raining.
B	You're half an hour late!	
	The dinner's cold.	The traffic was terrible.
C	Your mother is so annoying!	My mother? Annoying?
	Sorry,	
D	Shall we watch a film on TV?	No, I'm tired.

CAN YOU...?

- give and understand directions in the street
- give and understand directions for using public transport
- apologize

